



TORNADOS[®]
A WHIRLWIND OF FLAVOR!

**SPECIALLY
FORMULATED
FOR K-12**

**STUDENT-LOVED TORNADOS[®]
ARE BACK BY POPULAR DEMAND**
PERFECT FOR SNACKING AND A LA CARTE

Drive engagement and participation with the bold flavors kids go for and benefits that make the grade.

- Crafted with whole grain tortillas
- Deliver 1oz equivalent grain
- Provide 0.50 meat/meat alternate (M/MA) credit
- Smart Snacks compliant



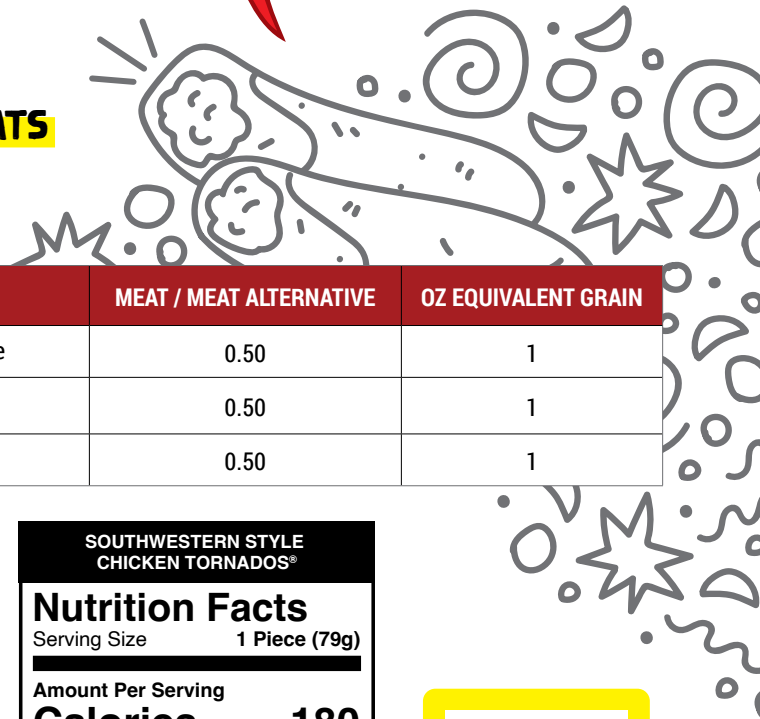
Ruiz[®]
FOODSERVICE

YOU ASKED. WE DELIVERED.

Nearly 60% of school districts are adding bold, global inspired flavors to boost participation.¹ Now's the time to roll Tornado® with whole grain tortillas onto your menus.



**SCHOOL MEAL PROGRAMS FEATURING
INTERNATIONAL FLAVORS AND FAMILIAR FORMATS
SEE HIGHER STUDENT ACCEPTANCE.²**



PRODUCT NUMBER	PACK SIZE	PRODUCT DESCRIPTION	MEAT / MEAT ALTERNATIVE	OZ EQUIVALENT GRAIN
00275	18/8/2.79 oz	Turkey Sausage, Egg & Cheese	0.50	1
00273	18/8/2.79 oz	Ranchero Beef & Cheese	0.50	1
00274	18/8/2.79 oz	Southwestern Style Chicken	0.50	1

TURKEY SAUSAGE, EGG & CHEESE TORNADOS®

Nutrition Facts
Serving Size 1 Piece (79g)

Amount Per Serving
Calories 170

% Daily Value*

Total Fat 6g	8%
Saturated Fat 1.5g	8%
Trans Fat 0g	
Cholesterol 25mg	8%
Sodium 260mg	11%
Total Carbohydrate 21g	8%
Dietary Fiber 2g	7%
Total Sugars 1g	
Includes 1g Added Sugars	2%
Protein 6g	
Vitamin D 0.1mcg	0%
Calcium 40mg	4%
Iron 1.3mg	8%
Potassium 100mg	2%

*The % Daily Value (DV) tells you how much a nutrient in a serving of food contributes to a daily diet. 2,000 calories a day is used for general nutrition advice.

RANCHERO BEEF & CHEESE TORNADOS®

Nutrition Facts
Serving Size 1 Piece (79g)

Amount Per Serving
Calories 180

% Daily Value*

Total Fat 7g	9%
Saturated Fat 2g	10%
Trans Fat 0g	
Cholesterol 10mg	3%
Sodium 360mg	16%
Total Carbohydrate 22g	8%
Dietary Fiber 2g	7%
Total Sugars 2g	
Includes 1g Added Sugars	2%
Protein 8g	
Vitamin D 0mcg	0%
Calcium 60mg	4%
Iron 1.6mg	8%
Potassium 130mg	2%

*The % Daily Value (DV) tells you how much a nutrient in a serving of food contributes to a daily diet. 2,000 calories a day is used for general nutrition advice.

SOUTHWESTERN STYLE CHICKEN TORNADOS®

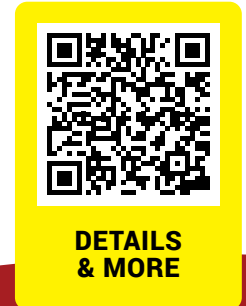
Nutrition Facts
Serving Size 1 Piece (79g)

Amount Per Serving
Calories 180

% Daily Value*

Total Fat 7g	9%
Saturated Fat 2g	10%
Trans Fat 0g	
Cholesterol 10mg	3%
Sodium 270mg	12%
Total Carbohydrate 23g	8%
Dietary Fiber 3g	11%
Total Sugars 1g	
Includes 1g Added Sugars	2%
Protein 7g	
Vitamin D 0mcg	0%
Calcium 60mg	4%
Iron 1.5mg	8%
Potassium 140mg	2%

*The % Daily Value (DV) tells you how much a nutrient in a serving of food contributes to a daily diet. 2,000 calories a day is used for general nutrition advice.



¹ School Nutrition Association, 2023 School Nutrition Trends Report
² FoodService Director, "Familiar Spins on Global Tastes Appeal to K-12 Students," 2023



Mexican-inspired. Wildly desired.™